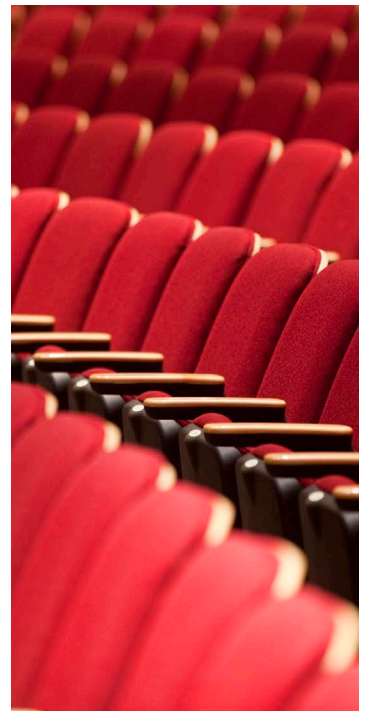
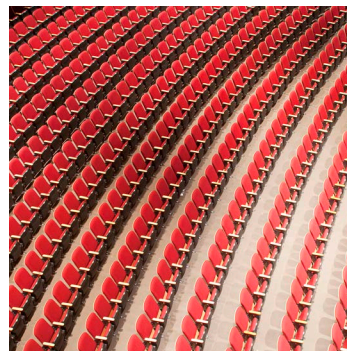


TCU PLACE



PROMOTER & THEATRE TECHNICAL INFORMATION





SID BUCKWOLD THEATRE

Located at TCU Place - Saskatoon's Arts & Convention Centre, Sid Buckwold Theatre has brought a diversity of world-class entertainment to Saskatoon since 1968 including Broadway shows, live music, comedians, childrens' shows, dance, special event speakers, and community events.

CONTACT INFORMATION

Theatre Bookings

Kirby Wirchenko, Director of Events and Community Engagement (306) 975-8899
kwirchenko@tcuplace.com

Technical

Mark von Eschen, Stage Carpenter
 (306) 975-7795
mvoneschen@tcuplace.com

Event Details

Daniel Smolinski, Front of House Manager
 (306) 975-7785
dsmolinski@tcuplace.com

Communications Coordinator/Web

Stephen Rutherford
 (306) 975-7781
srutherford@tcuplace.com

Box Office

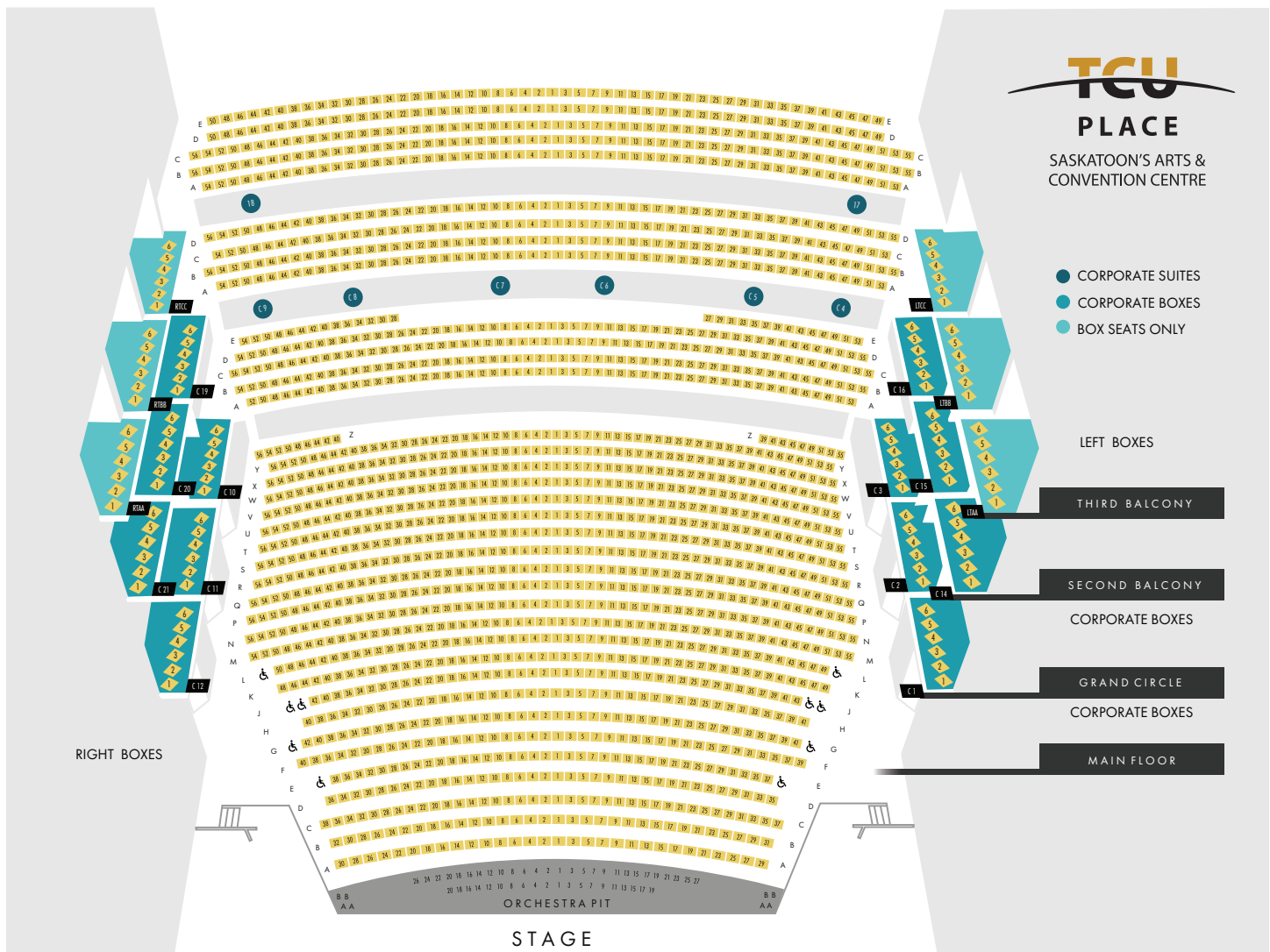
| | |
|--|--|
| Suzanne Bettschen | Alyssa Byrns |
| (306) 975-8397 | (306) 975-7914 |
| sbettschen@tcuplace.com | abyrns@tcuplace.com |

35 - 22nd Street East, Saskatoon, SK S7K 0C8
www.tcuplace.com • www.tcutickets.ca

TABLE OF CONTENTS

| | |
|------------------------------------|-------|
| SID BUCKWOLD THEATRE MAP | 1 |
| THEATRE INFORMATION | 1 |
| BOX OFFICE FEES | 2 |
| STAGE & FLY SYSTEM | 3-4 |
| LINE PLOT | 5-6 |
| LIGHTING INFORMATION | 7-8 |
| SID BUCKWOLD THEATRE LIGHTING PLOT | 9 |
| AUDIO INFORMATION | 10-11 |
| LOADING DOCK | 12 |
| REHEARSAL HALL | 12 |

SID BUCKWOLD THEATRE MAP



THEATRE INFORMATION

- » Continental style - no centre aisle
- » State-of-the-art sound & lighting
- » Three Tiers
- » 2027 seats total (without orchestra pit) - 24 board seats = 2003 revenue seats (2050 with Orchestra Pit)
- » Main Floor: 1,138
- » Grand Circle: 319
- » Second Balcony: 268
- » Third Balcony: 302
- » Orchestra Pit: 47

BOX OFFICE INFORMATION

Setup

- » Standard Set-up fee \$150.00, additional shows are \$100.00 for each show.
- » Additional fees will be charged for extensive set-ups or changes and will be quoted by the Client Services Technician or Box Office Supervisor.

Taxes

- » All ticket prices when considered should include 5% GST and 6% PST in the ticket price. The taxes will be indicated on the ticket face.

Facility Fee

- » \$3.00 charge added to the ticket price.
- » The facility fee is a house restoration fee paid by the patron for the future capital expenditures to the theatre. The charge is clearly identified as "Facility Fee" on the bottom of the ticket.

Ticket Page Setup Information

- » 1920x1080px - Header image on ticket page.
- » 400x266px - Can contain minimal information - used as a thumbnail image for our list of upcoming events. The date of the event will be listed below this in text.
- » Short writeup - a paragraph or so describing the event.

Please Send Ticketing Setup Information To

Suzanne Bettschen, (306) 975-8397

sbettschen@tcuplace.com

Alyssa Byrns, (306) 975-7914

abyrns@tcuplace.com



STAGE & FLY SYSTEM

Proscenium

- » Opening - 30'H x 59' 11" W (9.142m x 18.264m)
- » Fore Stage - U.S. Edge of Proscenium to D.S. Edge of Apron 5' 11" (1.802m)
- » Working Stage - U.S. Edge of Proscenium to back wall 54' 9" (16.689m)
- » Width, Centre line to S.R. 48' 6" (14.885m)/ Centre line to S.L. 48' 3" (14.805m)
- » Clear Wing Space - S.L. 34' 6" (10.480m)/ S.R. 19' 1" (5.825m)
- » Height to bottom of grid approximately 85' 8" (26.120m)

Stage Deck

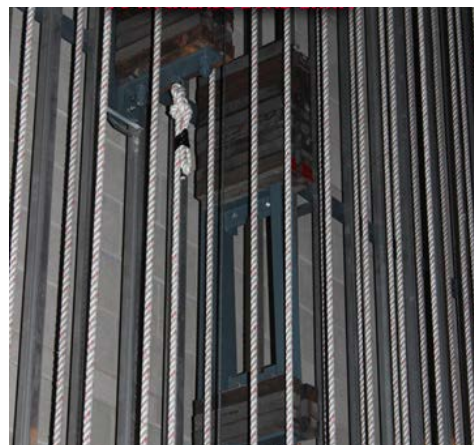
- » Black Battleship Linoleum over 1 ½" edge grain spruce, sprung for dance
- » Working load limit (average) 100 lb./sq. inch

Orchestra Pit (Cannot be moved with people on it)

- » Mechanical Spiral Lift (Gala Corp.) D.S. of apron
- » Capacity - Lifting: 13,500 kg / Static: 27,000 kg
- » Travel rate - 2metres/min
- » Travel distance - 3.05 metres (Stage Level to Trap Room – 8' 2" (2.49m) - Pit extends 24" ABOVE Stage Level (0.61 m)
- » Master Control at Stage Manager's position (D.S.R.)
- » Pickle operation from Pit Floor
- » I/R video surveillance from above pit
- » Width at U.S. edge – 48' 8" (14.840m)
- » Width at D.S. edge - 57' 3.6" (17.465m)
- » Depth at CTR. U.S. to D.S - 11' 3" (3.430m)(D.S. edge is arced)
- » Depth at Edges U.S. to D.S. - 8' 7" (2.615m)(D.S. edge is arced)
- » Carpet Level to Stage Level – 3' 5.5" (1.055m)
- » Fence Height – 3' 0" (0.91m)

Counterweight Fly System

- » Installed in 1997
- » Single purchase counterweight
- » Lock rail located S.R. Gallery
- » T-Channel for total # of line sets - 72
- » Installed number of line sets - 61
- » German line sets - 2
- » Batten length (Sch. 80 pipe) - 80'
- » Lines 1-7 on 6" centres
- » Arbour capacity - 740 lbs. (1,100 lbs with safety spacer removed)
- » Lines 11-72 on 8" centres
- » Arbour capacity - 1,020 lbs. (1,500 lbs with safety spacer removed)



Motorized Linesets

- » Installed 1997
- » Zetex 1210 Fire Curtain with ETL and manual emergency release system and fusible links
- » Variable speed grand drape with manual option
- » Lighting bridge
- » Variable speed motor traveller with manual option

Spot Line Sets

- » Provided 1997
 - » Full pin rail on S.L., partial on S.R.
 - » Movable linesets
- *for location of house goods, line set positions and other details, see attached line plot.

Orchestra Shell

- » Purchased 1997
- » Wenger Corp. "Diva" w/air transporter
- » 4 flown ceiling pieces: 2 at 4'W and 2 at 8' W
- » 10 rolling towers - 20' - 8' W
- » Playable area - 59' 6" wide at proscenium, 48' wide U.S x 30' 0" deep
- » Time required to set up - 1 hours

Risers (Rental Charges Apply)

- » Stageright system
- » 18 at 8" H
- » 18 at 16" H
- » 18 at 24" H
- » Decks 48 at 4' x 8', 2 surfaces: Grey Carpet or Black Hard Deck

Pianos (Rental Charges Apply)

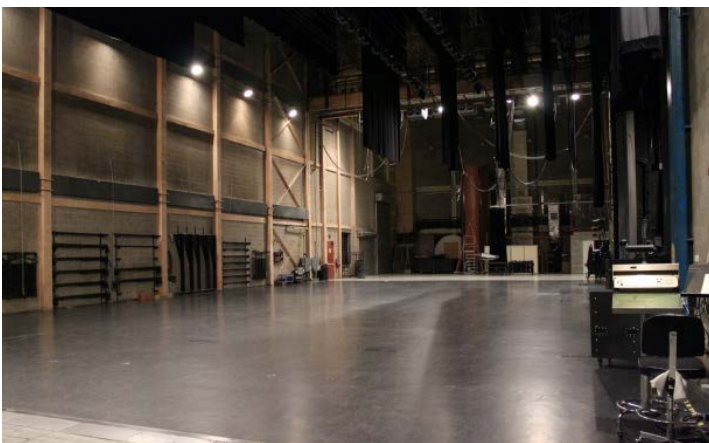
- » 9' Steinway Model D Grand Piano (purchased December 2012)
- » 9' Steinway Model D Grand Piano (purchased 1967, rebuilt December 2013)
- » 3 - Yamaha Upright Pianos

Music Stands

- » Manhasset with lights - 50

Dressing Rooms

- » Stage Level: 7 rooms - 2 - 4 person capacity
- » 2nd Level: 1 Large Choral Dressing Room
- » 25 - 30 persons with toilet, shower, sink, mirrors, lights, costume racks
- » 1 Small Choral Dressing Room
- » 10 - 15 persons with mirrors, lights, costume racks, external washroom

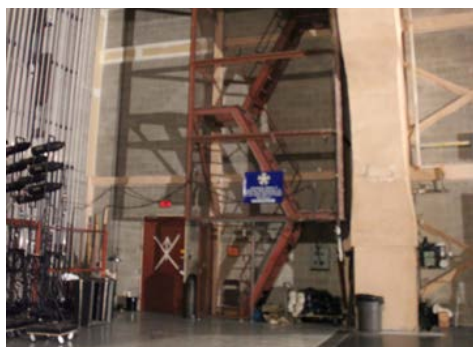


LINE PLOT

*Subject To Change (this is the general house hang)

| Line Set # | House Hang | Line Set Location | Weight (lbs) | Show Notes | Weight | House Goods |
|-------------------------|-------------------------|-------------------|----------------|---|---------|-------------------|
| | | - 5'-11" | Downstage edge | | | |
| 0'-0" = Proscenium Wall | | | | | | |
| 1 | Grand Drape | 1' 3" | | | | |
| 3 | Grand Border | 1' 11" | 240 | | 10x22 | |
| 4 | Grand Leg | 2' 6" | 480 | | 18x22 | |
| 5 | Orchestra Shell 1 | 3' 4" | 776 | | 35x22 | |
| 6 | Bridge Border | 3'11" | 126 | | 6x22 | |
| 7 | Batten | 4' 7-1/2" | | | | |
| Bridge | DS Edge LX Bridge | 5'1" | 1680lb empty | 42WB:Catwalk | 2100lbs | 10.5WB:House hang |
| | LX #1 | LX #1 | LX #1 | balance | | LX #1 |
| | US Edge LX Bridge | 7' 1 -1/2" | 1680lb empty | LX #1 (See LX Plot) | 2020lbs | 8.5WB:House hang |
| | | | | 42WB:Catwalk bal- ance | | |
| 11 | 1st Border | 7'11" | 120 | | 5.5x22 | |
| 12 | Batten | 8' 11" | | | | |
| 13 | 1st Leg | 9' 6" | 308 | | 14x22 | |
| 14 | Batten | 10' 1" | | | | |
| 16 | Orchestra Shell 2 | 11' 0" | 1044 | | 29x36 | |
| 17 | PIC Screen Border | 11' 10" | 120 | | | |
| 19 | Motorized Traveller | 12' 9" | 1008 | Pipe weight is 5 bricks, track is 12. Cloth is 11 bricks. | | |
| 20 | Picture Screen | 13' 8" | 198 | 234 with bottom skirt | 5.5x36 | 6.5 with skirt |
| 21 | LX2 Border | 14' 2" | | | | |
| 22 | Empty Batten | 14' 10" | | | | |
| 23 | LX #2 (See LX Plot) | 15' 6" | | | 26x36 | |
| 24 | Empty Batten | 16' 2" | | | | |
| 25 | 2nd Leg | 16' 10" | | | | |
| 26 | Empty Batten | 17' 6" | | | | |
| 27 | Empty Batten | 18' 2" | | | | |
| 28 | Empty Batten | 18' 10" | | | | |
| 29 | Batten | 19' 6" | | | | |
| 30 | Orchestra Shell 3 | 20' 6" | 954 lbs | | 26.5x36 | |
| 31 | Batten | 21' 4" | | | | |
| 32 | Batten | 22' 0' | | | | |
| 33 | 3rd Border | 22' 8" | 120 | | | |
| 34 | Batten | 23' 4" | | | | |
| 35 | 3rd Leg | 24' 0" | 360 | | | |
| 36 | Batten | 24' 8" | | | | |
| 37 | LX # 3 (See LX Plot) | 25' 4" | 900 | | 25x36 | |
| 38 | Batten | 26' 0" | | | | |
| 39 | Mid Stage Black Backing | 27'0" | 360 | | 9x36 | |
| 41 | Orchestra Shell 4 | 28' 0" | 576 lbs | | 16x36 | |

| Line Set # | House Hang | Line Set Location | Weight (lbs) | Show Notes | Weight | House Goods |
|------------|------------------------------|-------------------|--------------|-----------------------|--------|-------------------|
| 42 | Batten | 28' 10" | | | | |
| 43 | Batten | 29' 6" | | | | |
| 44 | Batten | 30' 2" | | | | |
| 45 | Batten | 30' 10" | | | | |
| 46 | Batten | 31' 6" | | | | |
| 47 | 4th Border | 32' 2" | 120 | | 3.5x36 | |
| 48 | Batten | 32' 10" | | | | |
| 49 | Upstage Black Backing | 33' 7-1/2" | 360 | | | |
| 50 | 4th Leg | 34' 2" | 360 | | 10x36 | |
| 51 | White Scrim | 34' 10" | 120 | | 3.5x36 | |
| 52 | Black Scrim | 35' 6" | 120 | | 3.5x36 | |
| 53 | Batten | 36' 2" | | | | |
| 54 | Batten | 36' 10" | | | | |
| 56 | Batten | 38' 2" | | | | |
| 59 | Batten | 40' 0" | | | | |
| 60 | CY Border | 40' 10" | 120 | | 3.5x36 | |
| 61 | Batten | 41' 6" | | | | |
| 62 | Manual Traveller | 42' 2" | 738 | | 21x26 | |
| 63 | CY LX | 42' 10" | 432 | | 12x36 | |
| 64 | Batten | 43' 6" | | | | |
| 65 | Batten | 44' 2" | | | | |
| 66 | Picture Screen (46'6"x21'6") | 44' 10" | 360 | | 10x36 | |
| 68 | Cyclorama | 46' 2" | 280 | | 8x36 | |
| 69 | Border with 100% Fullness | 46' 10" | 270 | | 7.5x36 | |
| 70 | Spare Border | 47' 6" | 120 | | 3.5x36 | |
| 71 | SR German | | 320 | | 9x36 | |
| 72 | SL German | | 320 | | 9x36 | |
| | Back Wall | 54'0" | | | | |
| No | 2,8,9,10,15,18 | Line Sets | No | 40,55,57,58,67 | | 61 linesets total |
| Lino | 100' wide | | | | | |
| | SR wing 19' | | | SL wing 34' | | |
| | Stage Lip to Back of House | 87'8" | | 180' cable run to FOH | | |



LIGHTING INFORMATION

Lighting Technician

Chris Watt cwatt@tcuplace.com

Please Note: Where possible, a lighting plot would be appreciated in advance of show arrival. All accessories, such as power distribution for band equipment, orchestra lights, offstage work light, some special effects, and most other incidental equipment is available. Please inquire in advance of show date for any special requirements.

Front of House

1st Cove

25' from stage at 60° angle from curtain line at centre

- » Contains:
 - 12 Source Four 575 watt 19°
 - 6 Source Four LED Lustr 2 19°
 - 6 Source 4WRD LED 19°

2nd Cove

42' from stage at 45° angle from curtain line at centre.

- » Contains:
 - 12 Source Four LED Lustr 2 19°
 - 12 Source 4WRD LED 19°

Spot Cove

110' from stage at 30° angle from curtain line at centre

- » Contains 16 (1-16) circuits normally powering 16 source four 10° fixtures

Follow Spots

- » 3 Lycian M2 2500 Watt short throw lens

Control Room

- » Centre of house at the rear of second balcony level
- » Approximately 110' at 20° from curtain line

Control Consoles

- » ETC Gio 4096 console with 10 motorized faders
- » 2 built in touch screen monitors
- » 1 external Elo touch screen monitor
- » 2 24" monitors
- » 1 ETC 10 x 20 Fader Wing for a total of 40
- » Keyboard and mouse

On Stage Client Console

- » ETC Gio 4096 10 Fader 2 touchscreens
- » 3 external monitors
- » Keyboard and Mouse

Lighting Fixtures

- » 20 Source Four 26 degree Lekos
- » 20 Source Four 36 degree Lekos
- » 12 Source Four 19 degree Lekos
- » 14 Chauvet Colorado Btn 144 Tour
- » 24 Chauvet Maverick Mk 2 Spots
- » 30 Chauvet R3 Wash
- » 36 ETC Source 4 Lustr S2
- » 18 ETC Source 4WRD LED

Dance Booms

- » 8 (4 per side) rolling - with 575 S4 shin and S4 Lustr LED

Additional

- » Radiance Hazer
- » Wireless DMX

Colour Filters

- » House stock is Lee, but also have a limited stock of Rosco - stock is dwindling, LED more common

Electrical Services

- » 2 x 400 amp three phase
- » Located on upstage left wall, both fitted with "E" type Cam Lock connectors

NB. There is a house hang in place using most of the above fixtures. Please call or email the house lighting tech before you start drawing.

Rigging

- » Front Truss Rigging Points from an I-beam over the pit
- » Above D.S. edge of pit between 1st and 2nd F.O.H.
- » Maximum point load of 4000lbs
- » Total beam load of 6000 lbs
- » Height to the bottom of the grid is 87 ft
- » Grid is 3" C-channel
- » Stage rigging is accomplished by attaching points to our existing grid
- » Points may be placed anywhere over the stage

Dimmers & Circuiting

- » 410 ETC Sensor D20 dimmers @ 2.4 kW each - 384 available, the remainder are house or work lights
- » All circuits eventually terminate in 20 amp twist lock receptacles

Floor Pockets

- » Stage Right - (296 - 325) in five pockets of 6 circuits
- » Stage Left - (326 - 349) in five pockets of 6 circuits
- » Up Stage - (350 - 367) in three pockets of 6 circuits
- » Lighting Bridge - (146 - 205) spaced at 1' intervals

Drop Boxes

- » Red Group - (122 - 145) in four boxes of 6 circuits
- » Blue Group - (206 - 229) in four boxes of 6 circuits
- » Green Group - (230 - 253) in four boxes of 6 circuits
- » Yellow Group - (254 - 277) in four boxes of 6 circuits

Term Panels (Wannabe box booms)

- » Stage Right(89-112) in three positions of 8 circuits
- » Stage Left(65-88) in three positions of 8 circuits
- » The above circuits are duplicated twice over the height of the panel.

Box Booms

- » (The real thing, only without any hanging positions)
- » House Right - (290-293)
- » House Left - (278-281)

Up Stage Right - Multis (Socapex)

(113-118), (119-121 + 368-370), (371-376), (377-382)

Orchestra Pit

(294, 295, 383, 384) duplicated right and left

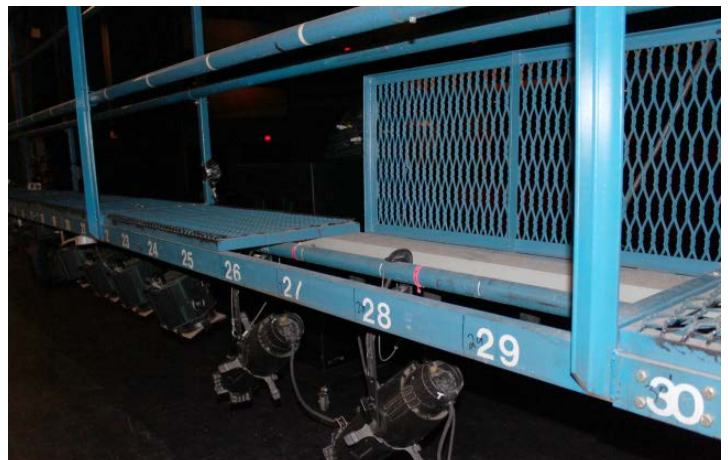
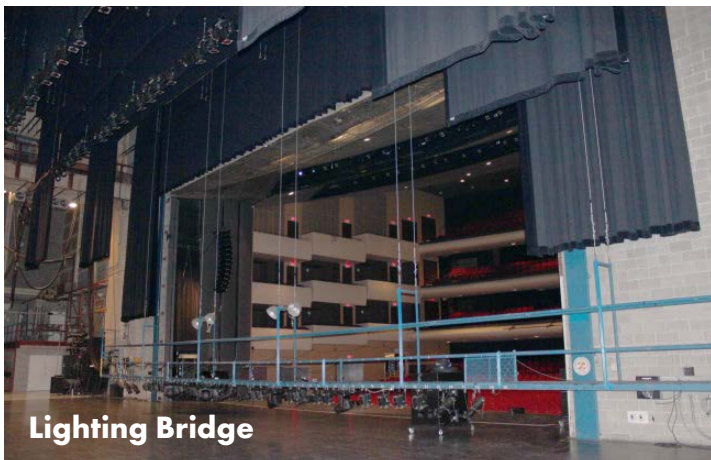
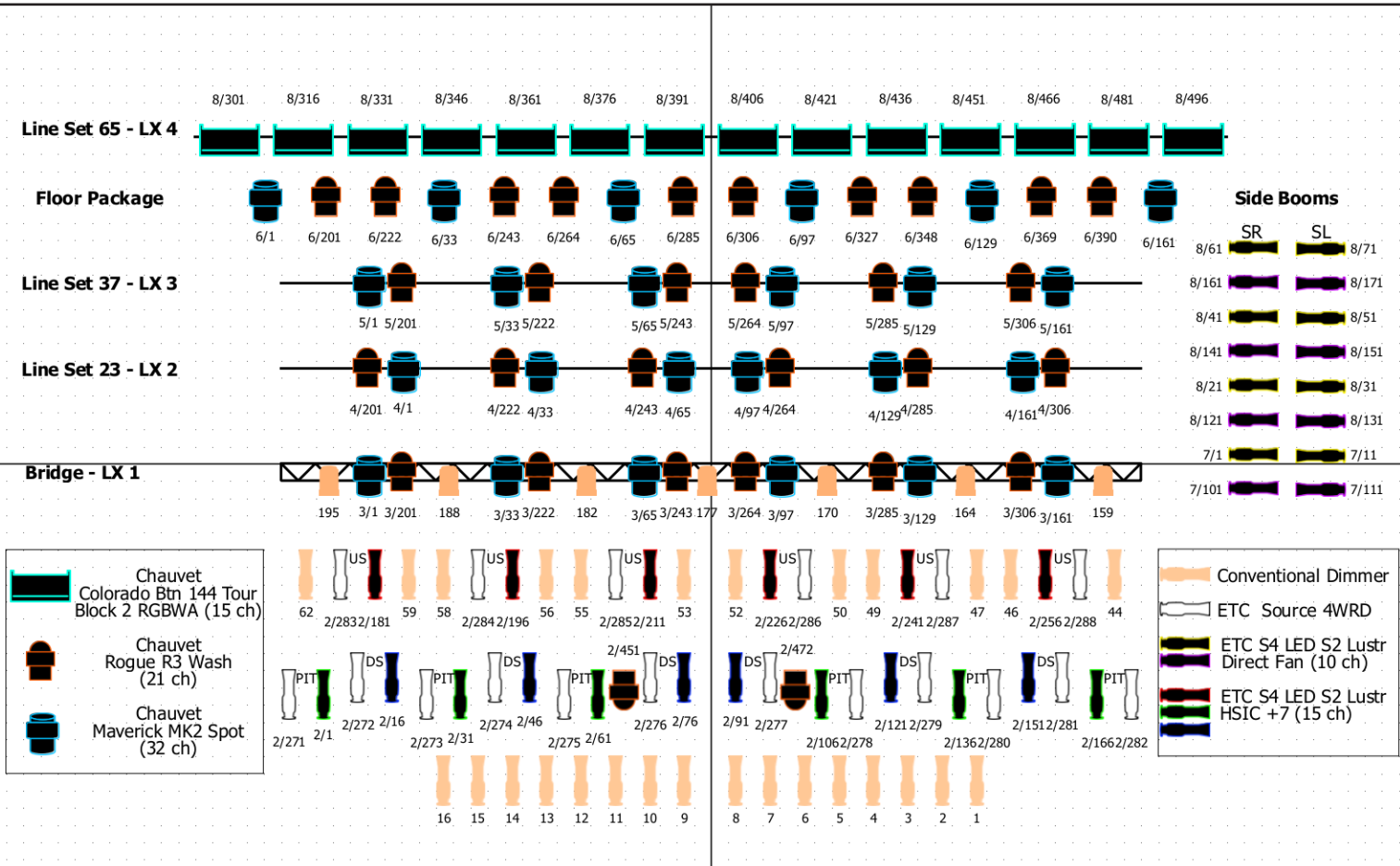


Follow Spot Booth



View from Follow Spot Booth

SID BUCKWOLD THEATRE LIGHTING PLOT



AUDIO INFORMATION

Audio Technician

Nicholas Hayes nhayes@tcuplace.com

House Audio Power

- » House System is powered by a three (3) phase / 208V/225 amp technical ground source.

Touring Audio Power

- » 400 Amp / 3 Phase/ Technical Ground
- » Located Stage Left Torm/Stage Right Torm
- » Located 25 Feet from L, downstage proscenium wall

Audio Consoles (Rental Charges Apply)

- » DiGiCo 338 (purchased 2024)
- » 64 mic input fully digital connects via 80 meter CAT-6 with RJ45 connectors
- » DiGiCo Q225 (purchased 2024)

Meyer Sound System (Rental Charges Apply)

- » 24 Meyer Melodie cabinets (12 per side)
- » 4 Meyer 700-HP Subs
- » 8 Meyer LINA frontfills
- » 2 Meyer UPJ-1P infill
- » 4 Meyer UPM-1P frontfill
- » Set up through Galileo 616; All zones accessible through software control

House Monitor - Monitor System

(Rental Charges Apply)

- » 10 Meyer MJF 212A high power monitors

Microphone Splitter (Rental Charges Apply)

Radial convertible with 48 channel of split 200 ft. main trunk and 20 ft. tail for stage

House Distributed Program & Page

- » Auto Patch with Emergency Page - Located in Audio Suite (Q-SYS)
- » Page & Program distribution to Tech Areas/ Dressing Rooms/Lobby Areas
- » Mac QLab

Miscellaneous Equipment

- » Direct Boxes – countryman - type 85 (1)
- » radial pro a/v laptop DI (2)
- » radial... J48 (2)
- » Various Adapters/Ground Lifts, etc.
- » One (1) Quad AR 204 Isolation Transformer units – Balanced / XLR
- » Assorted Length - KTM Tripod Stands

House Intercom (Wired)

- » 8 channel infrastructure. All functional areas are hardwired
- » 4 channel access to mobile port via Holding Room XLR Location (SB-704)
- » 1 Clear-Com Main Station (A & B Channel)
- » Stage Manager Mobile Cue Master Console

AUDIO INFORMATION

Wireless Com

8 dual channel clear com wireless

Portable Single

- » 8 beyer / learn com single or double muffs featherlites all noise canceling microphones
- » Com system contains a DUAL channel 'On-line' power supply back-up system
- » TW12B Clear Com communication Interfact to House Communication Systems - dual channel

In-House Permanent Com Positions

- » STG R Stage Carpenter
- » Position
- » LX booth
- » Audio Suite
- » Projection Room
- » Fly Gallery
- » DS Left & Right
- » US Left & Right
- » Spot Operator Position x 4
- » Pit Lift
- » Trap Room
- » Dimmer Room
- » Stage Carpenter's Office

Microphone Compliment - Hard-Wired

- » 2 Neuman km-184
- » 2 Electrovoice ND 408
- » 8 Shure SM-57
- » 4 Shure SM-58
- » 4 Shure beta-87
- » 1 AKG D-112
- » 2 AKG 535 eb
- » 2 AKG 451
- » 3 Sennheiser MD 421
- » 4 Crown PC 160 PZM microphones
- » 4 Shure MX 418 gooseneck podium mics with 185 headshells
- » 2 AKG 460eb
- » 1 Shure beta 57a
- » 8 Shure MX-202 choral microphones
- » 4 ATM pro 35
- » 6 Line CM-3

Wireless Microphone System

(Rental Charges Apply)

Fixed receiver location in 2nd balcony audio suite

- » 8 Channels Shure ULDX
- » 8 KSM-9 handheld microphones
- » 8 belt pack transmitters - ULDX1
- » 6 Shure TwinPlex TH53 headsets
- » 2 Sennheiser MKE-2 lapel mics

WIRELESS FREQUENCIES

- » 518.825 MHz
- » 519.350 MHz
- » 520.375 MHz
- » 521.725 MHz
- » 525.150 MHz
- » 530.250 MHz
- » Frequencies are programmable to suit artists' needs.

LOADING DOCK



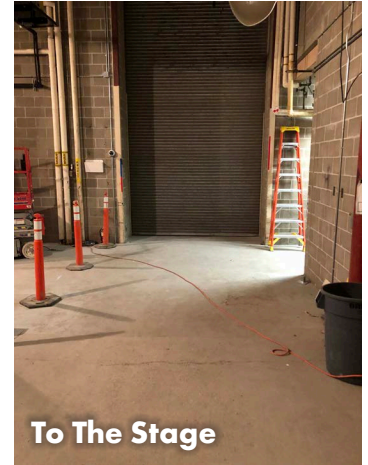
Outside View



To Outside



To The Dock



To The Stage

Loading Dock

- » Load in at truck height to stage height via permanent ramp
- » Suitable for 5 ton and 40' / 53' trailers
- » Full sized Overhead door outside to full sized overhead door on stage
- » 30' push to Stage Left Wing
- » No Parking in Loading Dock – arrange trailer parking with Spencer Richards at Security desk (306)975-7794 or srichards@tcuplace.com

Freight Elevator

- » Load in at ground level or stage height (short ramp to truck height)
- » Suitable for road crates, band gear, hampers etc. but not “meat racks” / large scenery carts
- » Freight car is 10'2"wx 18'8"d x 8'4"h
- » 10,000 lb capacity

REHEARSAL HALL

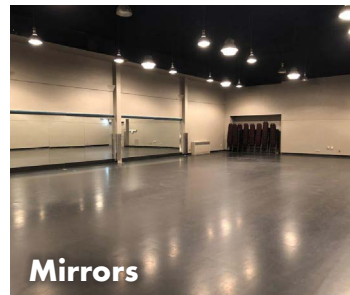
Rehearsal Hall

- » On second floor near chorus dressing rooms and washrooms
- » 60' wide x 38'6" deep (Comparable to stage size) with high ceilings (suitable for ballet lifts)

- » Linoleum floor
- » Front wall has 30' of mirrors (centered on wall) with blinds to cover as needed
- » Chairs and music stand available



Blinds



Mirrors



THIS IS YOUR PLACE

inquiries@tcuplace.com

tcuplace.com