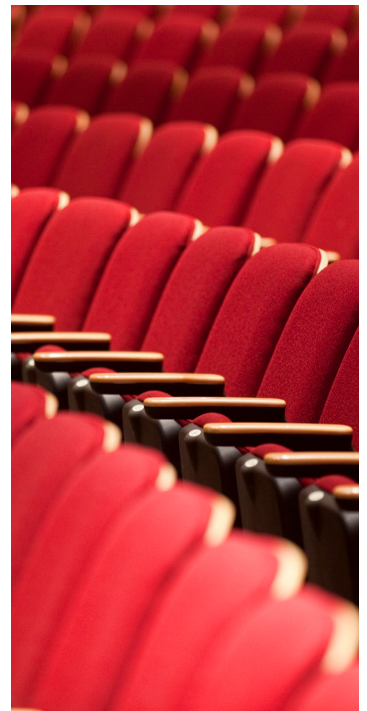
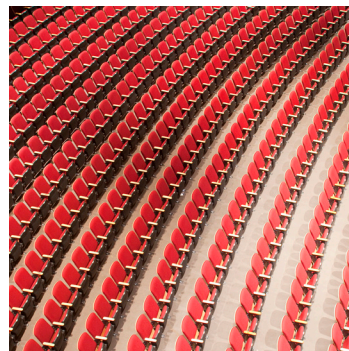


# TCU PLACE



## PROMOTER & THEATRE TECHNICAL INFORMATION



2023



# SID BUCKWOLD THEATRE

Located at TCU Place - Saskatoon's Arts & Convention Centre, Sid Buckwold Theatre has brought a diversity of world-class entertainment to Saskatoon since 1968 including Broadway Shows, live music, comedians, childrens' shows, dance, special event speakers, and community events.

## CONTACT INFORMATION

### Theatre Bookings

Gerard Cullen, Theatre Sales Manager  
(306) 975-7785

### Technical

Mark von Eschen, Stage Carpenter  
(306) 975-7795

### Event Details

Kirby Wirchenko, Director of Events and Community  
Engagement (306) 975-8899

### Communications Coordinator/Web

Stephen Rutherford  
(306) 975-7781

### Box Office Supervisor

Suzanne Bettschen  
(306) 975-8397

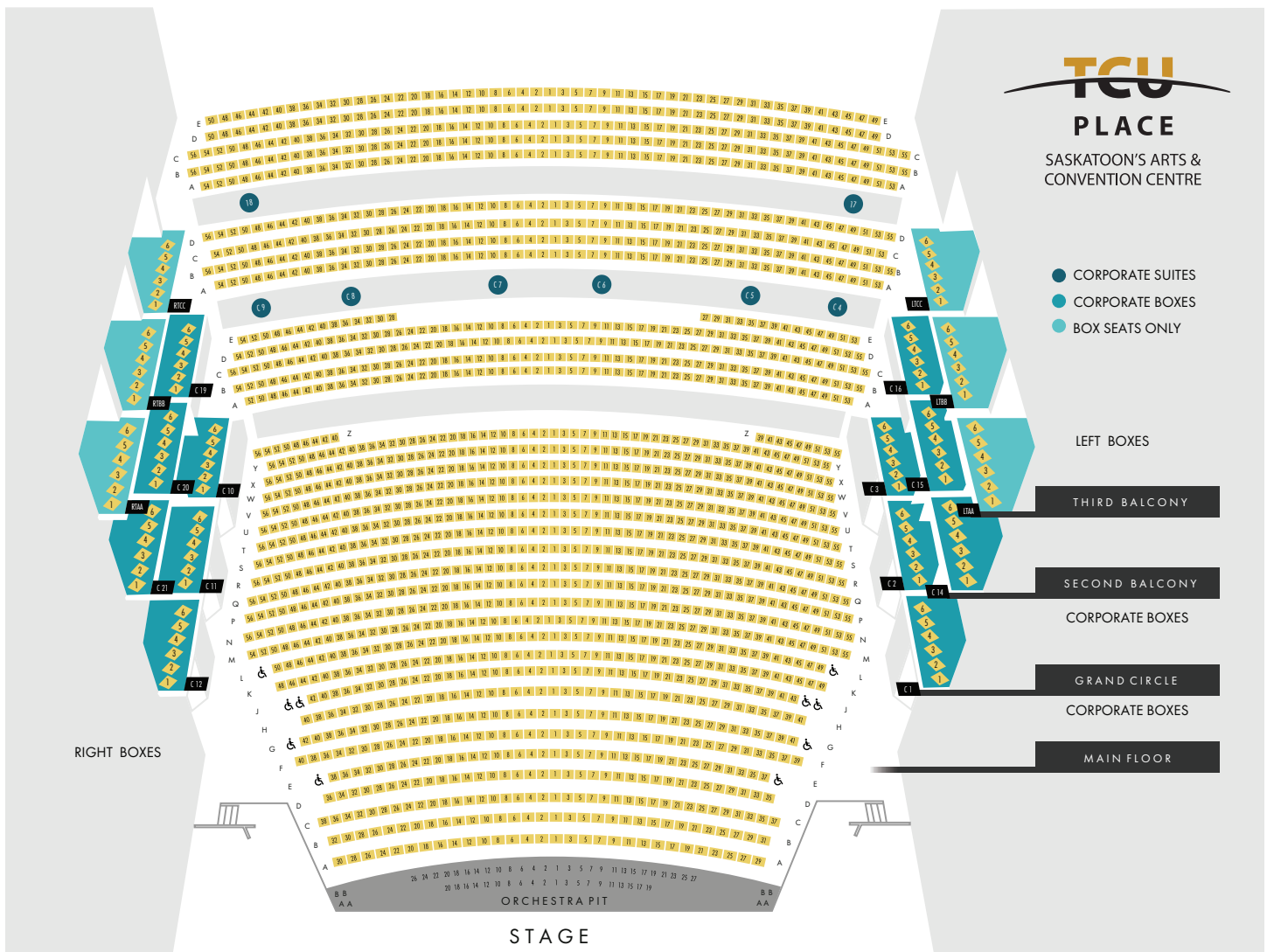
---

**35 - 22nd Street East, Saskatoon, SK S7K 0C8**  
**[www.tcuplace.com](http://www.tcuplace.com) · [www.tcutickets.ca](http://www.tcutickets.ca)**

# TABLE OF CONTENTS

SID BUCKWOLD THEATRE MAP	1
THEATRE INFORMATION	1
BOX OFFICE FEES	2
STAGE & FLY SYSTEM	3-4
LINE PLOT	5-6
LIGHTING INFORMATION	7-8
SID BUCKWOLD THEATRE LIGHTING PLOT	9
AUDIO INFORMATION	10-11
LOADING DOCK	12
REHEARSAL HALL	12

# SID BUCKWOLD THEATRE MAP



## THEATRE INFORMATION

- » Continental style - no centre aisle
- » Newly renovated soft seats
- » State-of-the-art sound & lighting
- » Three Tiers
- » 2003 paying seats and stage
- » 2027 seats total (without orchestra pit) - 24 board seats = 2003 revenue seats (2050 with Orchestra Pit)

### SEATING LAYOUT

- » Main Floor: 1,138
- » Grand Circle: 319
- » Second Balcony: 268
- » Third Balcony: 302
- » Orchestra Pit: 47

# BOX OFFICE FEES

## Setup

- » Standard Set-up fee \$150.00, additional shows are \$100.00 for each show.
- » Additional fees will be charged for extensive set-ups or changes and will be quoted by the Client Services Technician or Box Office Supervisor.

## Taxes

- » All ticket prices when considered should include GST and PST in the ticket price. (On the ticket face the taxes will be indicated).

## Commission

- » 5% of gross sales before taxes (this rate covers all credit card charges, printing of paid and comp ticket charges)

## Facility Fee

- » \$3.00 charge added to the ticket price.
- » The facility fee is a house restoration fee paid by the patron for the future capital expenditures to the theatre. The charge is clearly identified as "Facility Fee" on the bottom of the ticket.



# STAGE & FLY SYSTEM

## Proscenium

- » Opening - 30'H x 59' 11" W (9.142m x 18.264m)
- » Fore Stage - U.S. Edge of Proscenium to D.S. Edge of Apron 5' 11" (1.802m)
- » Working Stage - U.S. Edge of Proscenium to back wall 54' 9" (16.689m)
- » Width, Centre line to S.R. 48' 6" (14.885m)/ Centre line to S.L. 48' 3" (14.805m)
- » Clear Wing Space - S.L. 34' 6" (10.480m)/ S.R. 19' 1" (5.825m)
- » Height to bottom of grid approximately 85' 8" (26.120m)

## Stage Deck

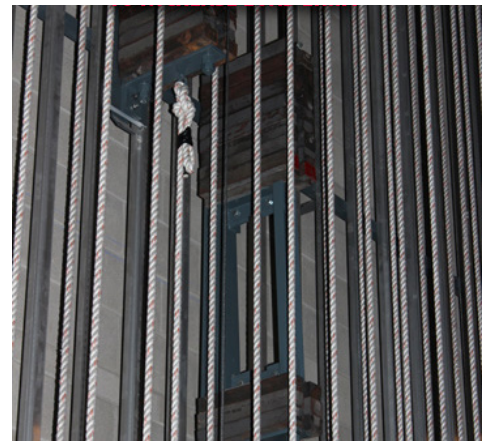
- » Black Battleship Linoleum over 1 ½" edge grain spruce, sprung for dance
- » Working load limit (average) 100 lb./sq. inch

## Orchestra Pit (Cannot be moved with people on it)

- » Mechanical Spiral Lift (Gala Corp.) D.S. of apron
- » Capacity - Lifting: 13,500 kg / Static: 27,000 kg
- » Travel rate - 2metres/min
- » Travel distance - 3.05 metres (Stage Level to Trap Room – 8' 2" (2.49m) - Pit extends 24" ABOVE Stage Level (0.61 m)
- » Master Control at Stage Manager's position (D.S.R.)
- » Pickle operation from Pit Floor
- » I/R video surveillance from above pit
- » Width at U.S. edge – 48' 8" (14.840m)
- » Width at D.S. edge - 57' 3.6" (17.465m)
- » Depth at CTR. U.S. to D.S - 11' 3" (3.430m)(D.S. edge is arced)
- » Depth at Edges U.S. to D.S. - 8' 7" (2.615m)(D.S. edge is arced)
- » Carpet Level to Stage Level – 3' 5.5" (1.055m)
- » Fence Height – 3' 0" (0.91m)

## Counterweight Fly System

- » Installed in 1997
- » Single purchase counterweight
- » Lock rail located S.R. Gallery
- » T-Channel for total # of line sets - 72
- » Installed number of line sets - 61
- » German line sets - 2
- » Batten length (Sch. 80 pipe) - 80'
- » Lines 1-7 on 6" centres
- » Arbour capacity - 740 lbs. (1,100 lbs with safety spacer removed)
- » Lines 11-72 on 8" centres
- » Arbour capacity - 1,020 lbs. (1,500 lbs with safety spacer removed)



### Motorized Linesets

- » Installed 1997
- » Zetex 1210 Fire Curtain with ETL and manual emergency release system and fusible links
- » Variable speed grand drape with manual option
- » Lighting bridge
- » Variable speed motor traveller with manual option

### Hemp (Spot) Line Sets

- » Provided 1997
  - » Full pin rail on S.L., partial on S.R.
  - » Movable hemp linesets
- \*for location of house goods, line set positions and other details, see attached line plot.

### Orchestra Shell

- » Purchased 1997
- » Wenger Corp. "Diva" w/air transporter
- » 4 flown ceiling pieces: 2 at 4'W and 2 at 8' W
- » 10 rolling towers - 20' - 8' W
- » Playable area - 59' 6" wide at proscenium, 48' wide U.S x 30' 0" deep
- » Time required to set up - 1 hours

### Risers (Rental Charges Apply)

- » Stageright system
- » 18 at 8" H
- » 18 at 16" H
- » 18 at 24" H
- » Decks 48 at 4' x 8', 2 surfaces: Grey Carpet or Black Hard Deck

### Pianos (Rental Charges Apply)

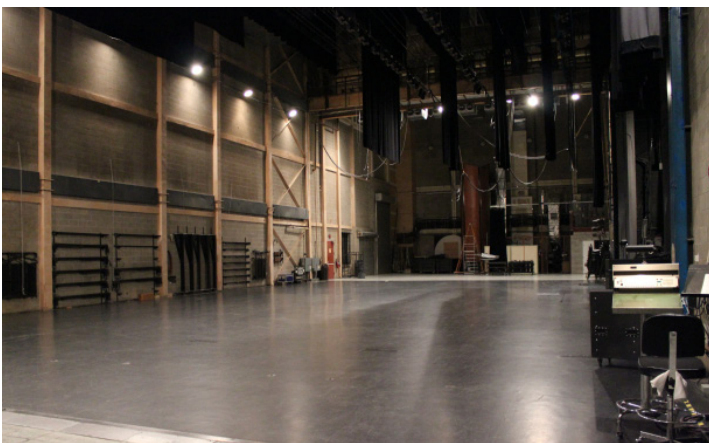
- » 9' Steinway Model D Grand Piano (purchased December 2012)
- » 9' Steinway Model D Grand Piano (purchased 1967, rebuilt December 2013)
- » 3 - Yamaha Upright Pianos

### Music Stands

- » Manhasset with lights - 50

### Dressing Rooms

- » Stage Level: 7 rooms - 2 - 4 person capacity
- » 2nd Level: 1 Female Choral Dressing Room
- » 25 - 30 persons with toilet, shower, sink, mirrors, lights, costume racks
- » 1 Male Choral Dressing Room
- » 25 - 30 persons with mirrors, lights, costume racks, external washroom



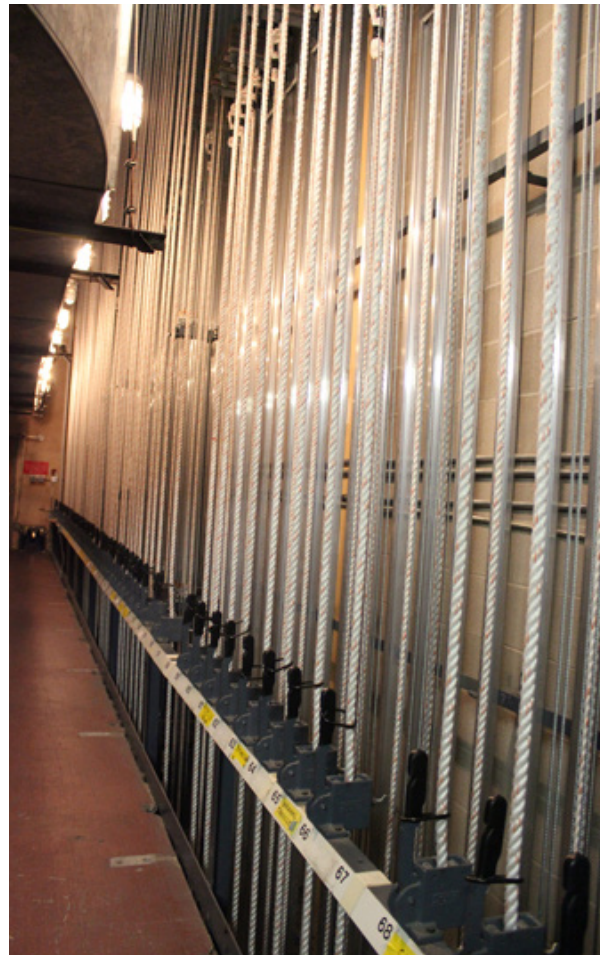
# LINE PLOT

\*Subject To Change (this is the general house hang)

Line Set #	House Hang	Line Set Location	Weight	Show Notes	Weight	House Goods
		- 5' - 11"		Downstage edge		
	0' - 0" = Proscenium Wall					
1	Grand Drape	1' 3"				
3	Grand Border	1' 11"				
4	Grand Leg	2' 6"				
5	Orchestra Shell 1	3' 4"				
6	Batten	3' 11"				
7	Batten	4' 7½"				
	DS Edge Lx Bidge	5' 1"	1680 lbs. (empty)	42WB:Catwalk balance	2100 lbs.	10.5WB:House hang
Bridge	LX #1	LX #1	LX #1	LX #1 (See LX Plot)		LX #1
	US Edge Lx Bidge	7' 1½"	1680 lbs. (empty)	42WB:Catwalk balance	2020 lbs.	8.5WB:House hang
11	1st Border	7' 11"				
12	Batten	8' 11"				
13	1st Leg	9' 6"				
14	Batten	10' 1"				
16	Orchestra Shell 2	11' 0"				
17	Batten	11' 10"				
19	Motorized Traveller	12' 9"				
20	Batten	13' 8"				
21	LX#2 Border	14' 2"				
22	Batten	14' 10"				
23	LX#2	15' 6"				
24	2nd Border	16' 2"				
25	2nd Leg	16' 10"				
26	Picture Screen Leg	17' 6"				
27	Picture Screen	18' 2"		15'x20'		
28	Batten	18' 10"				
29	Batten	19' 6"				
30	Orchestra Shell 3	20' 6"				
31	Batten	21' 4"				
32	Batten	22' 0'				
33	Batten	22' 8"				
34	3rd Border	23' 4"				
35	3rd Leg	24' 0"				
36	Batten	24' 8"				
37	LX # 3 (See LX Plot)	25' 4"				
38	Batten	26' 0"				
39	Black Backing (2 Pair Legs)	27' 0"				
41	Orchestra Shell 4	28' 0"				



Line Set #	House Hang	Line Set Location
42	Batten	28' 10"
43	Batten	29' 6"
44	Batten	30' 2"
45	Batten	30' 10"
46	Batten	31' 6"
47	4th Border	32' 2"
48	Batten	32' 10"
49	Black Backing (2 Pair Legs)	33' 7½"
50	4th Leg	34' 2"
51	White Scrim	34' 10"
52	Black Scrim	35' 6"
53	Batten	36' 2"
54	Batten	36' 10"
56	Batten	38' 2"
59	Batten	40' 0"
60	Batten	40' 10"
61	Cyc LX	41' 6"
62	Batten	42' 2"
63	Batten	42' 10"
64	Black Border	43' 6"
65	Manual Traveller	44' 2"
66	Picture Screen (46'6"x21'6")	44' 10"
68	Cyclorama	46' 2"
69	Border with 100% Fullness	46' 10"
70	Spare Border	47' 6"
71	SR German	
72	SL German	



# LIGHTING INFORMATION

## Lighting Technician

Chris Watt (306) 975-7787

**Please Note:** Where possible, a lighting plot would be appreciated in advance of show arrival. All accessories, such as power distribution for band equipment, orchestra lights, offstage work light, some special effects, and most other incidental equipment is available. Please inquire in advance of show date for any special requirements.

## Front of House

### 1st Cove

25' from stage at 60° angle from curtain line at centre

- » Contains:
  - 12 Source Four 575 watt 19°
  - 6 Source Four LED Lustr 2 19°
  - 6 Source 4WRD LED 19°

### 2nd Cove

42' from stage at 45° angle from curtain line at centre.

- » Contains:
  - 12 Source Four LED Lustr 2 19°
  - 12 Source 4WRD LED 19°

### Spot Cove

110' from stage at 30° angle from curtain line at centre

- » Contains 16 (1-16) circuits normally powering 16 source four 10° fixtures

## Follow Spots

- » 3 Lycian M2 2500 Watt short throw lens

## Control Room

- » Centre of house at the rear of second balcony level
- » Approximately 110' at 20° from curtain line

## Control Consoles

- » ETC Gio 4096 console with 10 motorized faders
- » 2 built in touch screen monitors
- » 1 external Elo touch screen monitor
- » 2 24" monitors
- » 1 ETC 10 x 20 Fader Wing for a total of 40
- » Keyboard and mouse

## On Stage Client Console

- » ETC Gio 4096 10 Fader 2 touchscreens
- » 3 external monitors
- » Keyboard and Mouse

## Console Notes

- » 2 input Grey Interface DMX Manager (1 input normally occupied by house console)
- » 5 way DMX Repeater (1 output hardwired to house dimmers)
- » 12 DMX dry lines from various places around the stage and front of house, terminating in the control room
- » 1 universe DMX Opto splitter
- » ETC Net with master console and tracking backup

## Lighting Fixtures

- » 4 Source Four par 6 bars with associated Socapex cable and lenses (rental charges apply)
- » 20 Source Four 26 degree Lekos
- » 20 Source Four 36 degree Lekos
- » 12 Source Four 19 degree Lekos
- » 14 Chauvet Colorado Btn 144 Tour
- » 24 Chauvet Maverick Mk 2 Spots
- » 30 Chauvet R3 Wash
- » 36 ETC Source 4 Lustr S2
- » 18 ETC Source 4WRD LED

*NB. There is a house hang in place using most of the above fixtures. Please call or email the house lighting tech before you start drawing.*



**Follow Spot Booth**



**View from Follow Spot Booth**

### **Dance Booms**

- » 8 (4 per side) rolling - with 575 S4 shin and S4 Lustr LED

### **Additional**

- » Radiance Hazer
- » Wireless DMX

### **Colour Filters**

- » House stock is Lee, but also have a limited stock of Rosco

### **Electrical Services**

- » 2 x 400 amp three phase
- » Located on upstage left wall, both fitted with "E" type Cam Lock connectors

### **Rigging**

- » Front Truss Rigging Points from an I-beam over the pit
- » Above D.S. edge of pit between 1st and 2nd F.O.H.
- » Maximum point load of 4000lbs
- » Total beam load of 6000 lbs
- » Height to the bottom of the grid is 87 ft
- » Grid is 3" C-channel
- » Stage rigging is accomplished by attaching points of our existing grid
- » Points may be placed anywhere over the stage

### **Dimmers & Circuiting**

- » 410 ETC Sensor D20 dimmers @ 2.4 kW each - 384 available, the remainder are house or work lights
- » All circuits eventually terminate in 20 amp twist lock receptacles

### **Floor Pockets**

- » Stage Right - (296 - 325) in five pockets of 76 circuits
- » Stage Left - (326 - 349) in five pockets of 6 circuits
- » Up Stage - (350 - 367) in three pockets of 6 circuits
- » Lighting Bridge - (146 - 205) spaced at 1' intervals

### **Drop Boxes**

- » Red Group - (122 - 145) in four boxes of 6 circuits
- » Blue Group - (206 - 229) in four boxes of 6 circuits
- » Green Group - (230 - 253) in four boxes of 6 circuits
- » Yellow Group - (254 - 277) in four boxes of 6 circuits

### **Term Panels** (Wannabe box booms)

- » Stage Right(89-112) in three positions of 8 circuits
- » Stage Left(65-88) in three positions of 8 circuits
- » The above circuits are duplicated twice over the height of the panel.

### **Box Booms**

- » (The real thing, only without any hanging positions)
- » House Right - (290-293)
- » House Left - (278-281)

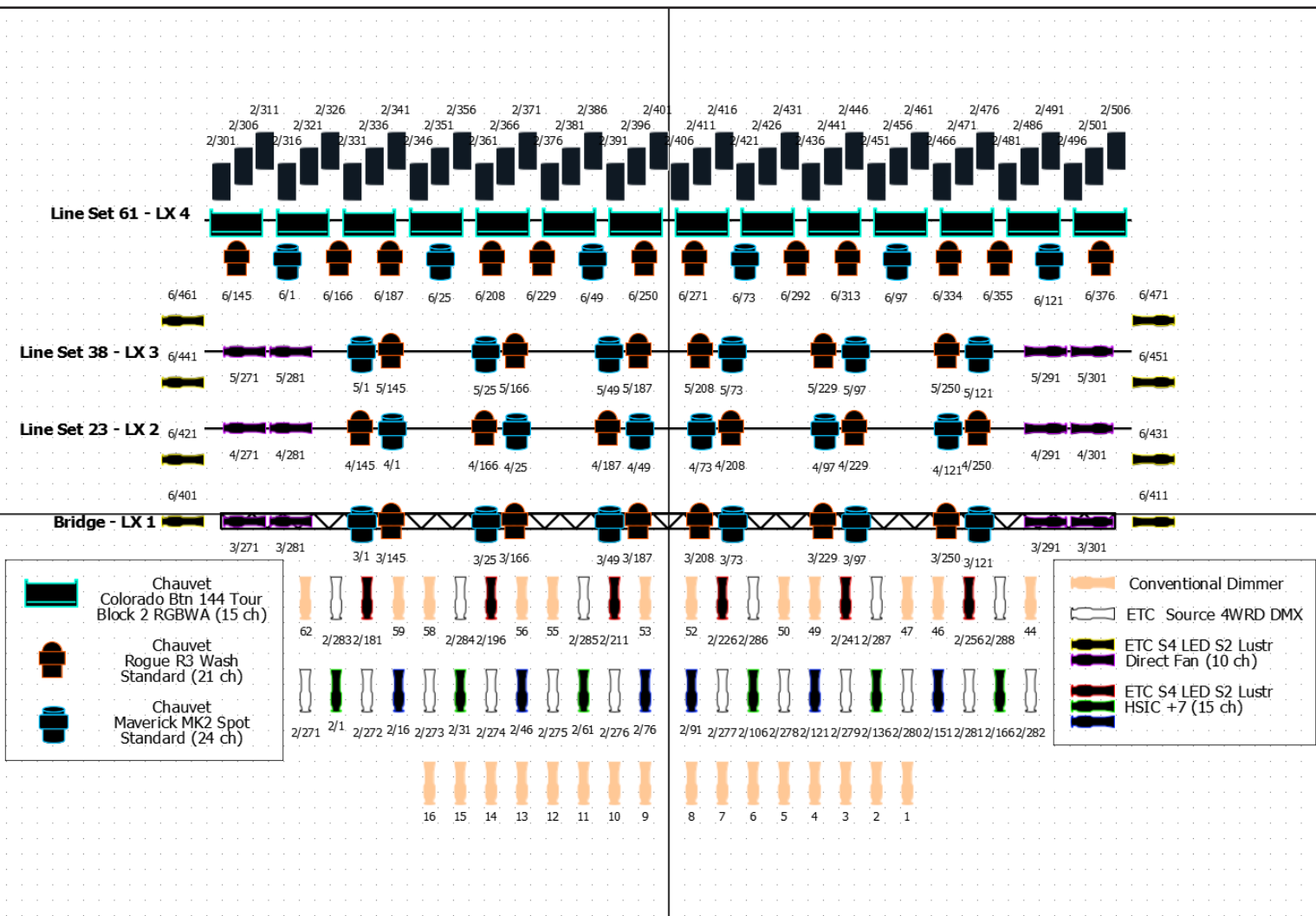
### **Up Stage Right** - Multis (Socapex)

(113-118), (119-121 + 368-370), (371-376), (377-382)

### **Orchestra Pit**

(294, 295, 383, 384) duplicated right and left

# SID BUCKWOLD THEATRE LIGHTING PLOT



# AUDIO INFORMATION

## Audio Technician

Shaun Dyksman (306) 975-7788

### House Audio Power

- » House System is powered by a three (3) phase / 208V/225 amp technical ground source.

### Touring Audio Power

- » 400 Amp / 3 Phase/ Technical Ground
- » Located Stage Left Torm
- » Located 25 Feet from L, downstage proscenium wall

### Audio Consoles (Rental Charges Apply)

- » Soundcraft VI6 digital (purchases 2008)
- » 64 mic input fully digital connects via 80 meter cat-6 with RJ45 connectors
- » Soundcraft VI-1 (purchased 2010)

### Meyer Sound System (Rental Charges Apply)

- » 24 Meyer Melodie cabinets (12 per side)
- » 4 Meyer 700-Hp Subs
- » 2 Meyer UPJ-1P infill
- » 4 Meyer UPM-1P frontfill
- » Set up through Galileo 616; All zones accessible through software control

### House Monitor - Monitor System

(Rental Charges Apply)

- » 10 Meyer MJF 212A high power monitors (Rental charges apply)
- » 6 JBL 12" cabaret (8 ohm)

### Microphone Splitter (Rental Charges Apply)

Radial convertible with 48 channel of split 200 ft. main trunk and 20 ft. tail for stage

### Monitor Amplifiers

2 QSC 3350 amplifiers 220 watts at 8 ohms

### Monitor Equalization

(Rental Charges Apply)

6 DBX 2231 eq

### House Distributed Program & Page

- » AMX / Auto Patch with Emergency Page - Located in Audio Suite
- » Page & Program distribution to Tech Areas/ Dressing Rooms/Lobby Areas
- » 1 USB burner (Tascam - SS - R200)
- » 2 DISC PLAYERS (Denon - 650F (2) Two)

### Reverb Units

- » Lexicon PCM 96
- » Yamaha SPV-2000
- » EMT-ST140 plate Reverb (1) One - Mono in x 2 out

### Miscellaneous Equipment

- » Direct Boxes – countryman - type 85 (1)
- » radial pro a/v laptop DI (2)
- » radial... J48 (2)
- » rodam... director (3)
- » Various Adapters/Ground Lifts, etc.
- » One (1) Quad AR 204 Isolation Transformer units – Balanced / XLR
- » Two – DBX Model 1046 Quad Comp. / Limiters
- » Various Length Goose Necks
- » Assorted Length - KTM Tripod Stands

### House Intercom (Wired)

- » 8 channel infrastructure. All functional areas are hardwired
- » 4 channel access to mobile port via Holding Room XLR Location.
- » 1 Clear-Com MS-812A-9 Main Station (A & B Channel)
- » 1 Clear-Com MX-820 matrix switcher
- » Stage Manager Mobile Cue Master Console

# AUDIO INFORMATION

## Wireless Com

8 dual channel clear com wireless

## Portable Single

- » 8 beyer / learn com single or double muffs featherlites all noise canceling microphones
- » Com system contains a DUAL channel 'On-line' power supply back-up system
- » TW12B Clear Com communication Interfact to House Communication Systems - dual channel

## In-House Permanent Com Positions

- » STG R Stage Carpenter
- » Position
- » LX booth
- » Audio Suite
- » Projection Room
- » Fly Gallery
- » DS Left & Right
- » US Left & Right
- » Spot Operator Position x 4
- » Pit Lift
- » Trap Room
- » Dimmer Room
- » Stage Carpenter's Office

## Microphone Compliment - Hard-Wired

- » 2 Neuman km-184
- » 2 Electrovoice ND 408
- » 8 Shure SM-57
- » 4 Shure SM-58
- » 4 Shure beta-87
- » 1 AKG D-112
- » 2 AKG 535 eb
- » 2 AKG 451
- » 3 Sennheiser MD 421
- » 4 Crown PC 160 PZM microphones
- » 4 Shure MX 418 gooseneck podium mics with 185 headshells
- » 2 AKG 460eb
- » 1 Shure beta 57a
- » 8 Shure MX-202 choral microphones
- » 4 ATM pro 35
- » 1 Line CM-3

## Wireless Microphone System

(Rental Charges Apply)

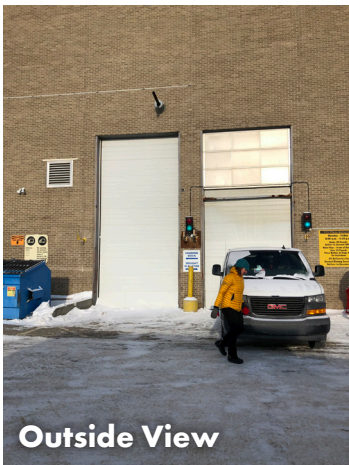
- » (fixed receiver location in 2nd balcony audio suite)
- » 3 Shure UR4D+ dual channel receivers
- » 6 KSM-9 handheld microphones
- » 6 UR-1 belt pack transmitters
- » 6 Countryman E6 head sets
- » 2 Sennheiser MKE-2 lapel mics

## WIRELESS FREQUENCIES

- » 518.825 MHz
- » 519.350 MHz
- » 520.375 MHz
- » 521.725 MHz
- » 525.150 MHz
- » 530.250 MHz
- » Frequencies are programmable to suit artists' needs.



# LOADING DOCK



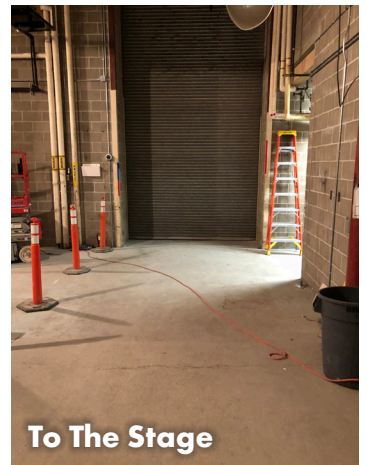
Outside View



To Outside



To The Dock



To The Stage

## Loading Dock

- » Load in at truck height to stage height via permanent ramp
- » Suitable for 5 ton and 40' / 53' trailers
- » Full sized Overhead door outside to full sized overhead door on stage
- » 30' push to Stage Left Wing
- » Suitable for 5 ton and 40' / 53' trailers
- » No Parking in Loading Dock – arrange trailer parking with Sean Bridgette at Security desk (306)975-7794

## Freight Elevator

- » Load in at ground level or stage height (short ramp to truck height)
- » Suitable for road crates, band gear, hampers etc. but not “meat racks” / large scenery carts
- » Freight car is 10'2"wx 18'8"d x 8'4"h
- » 10,000 lb capacity

# REHEARSAL HALL

## Rehearsal Hall

- » On second floor near chorus dressing rooms and washrooms
- » 60' wide x 38'6" deep (Comparable to stage size) with high ceilings (suitable for ballet lifts)
- » Linoleum floor
- » Front wall has 30' of mirrors (centered on wall) with blinds to cover as needed
- » Chairs and music stand available



Blinds



Mirrors



**THIS IS YOUR PLACE**

**[inquiries@tcuplace.com](mailto:inquiries@tcuplace.com)**

**[tcuplace.com](http://tcuplace.com)**